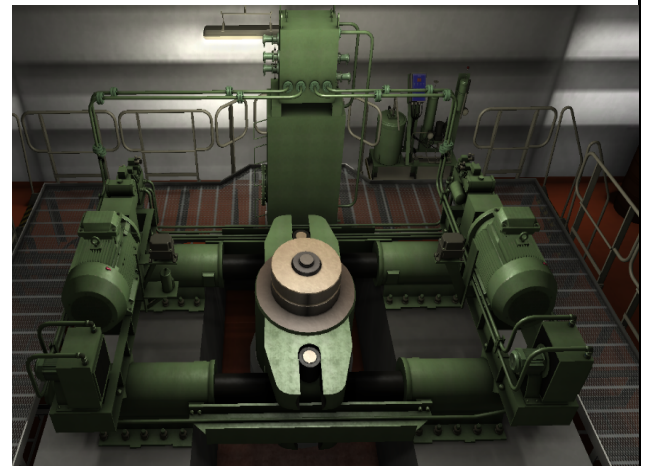


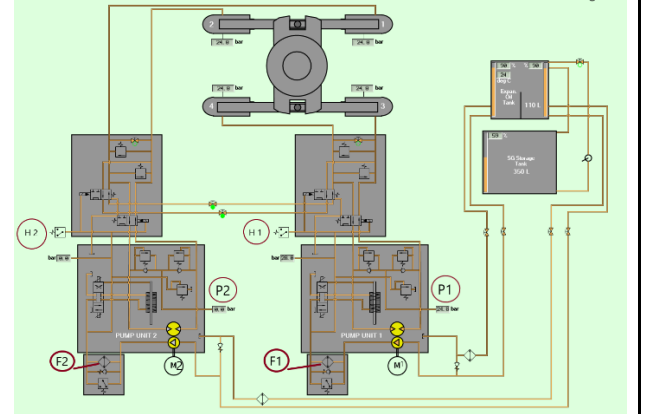
Teacher Guide - BUL 006 - Scenario 21
Steps in the Application of BUL 006 - Scenario 21

1	<p>Sound and light signal on navigation bridge - <i>In case of Auto Pilot steering appears: “STEERING GEAR FAILURE” and “BLACKOUT” and indication lamp illuminated on Control Panel of Operation Console in the Steering Gear Room – you have:</i></p>	
2	<p>Press “Acknowledge” button on the keyboard.</p>	
3	<p>Waiting for starting procedures of Emergency Generator (EmGS).</p>	

- 4 In case you cannot control the steering with above procedures – Student proceeds to the Steering Gear Room. (It takes a few minutes you to go down).



Steering Gear

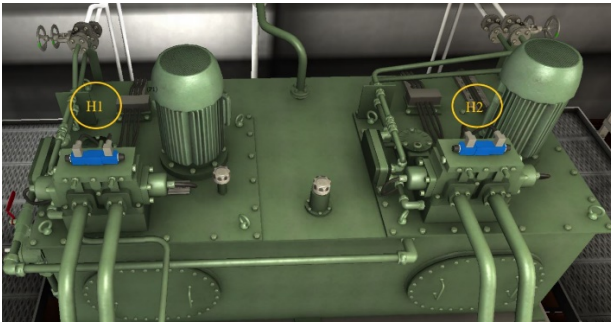



- 5 Check electric power supply of *HYDROPUMP Port side* (HP-Ps) and *HYDROPUMP Starboard side* (HP-Stbs).



- 6 Check fuse of the electric power supply in the pumps control panels.



7	<p>If finally is not electric power supply:</p>	
8	<p>Start procedures to steer by Emergency Steering Handle:</p> <ol style="list-style-type: none"> 1) Make sure that at least one Steering Gear is running; 2) In case the control unit power is “ON” (if you forget to turn “OFF” the control stand switch), turn “OFF” the switch inside the control unit switch board; 3) Steer by lever movement. 	  <p>3) Steer by lever movement</p>
9	<p>Finished Scenario.</p>	